



## Sample D4220228D

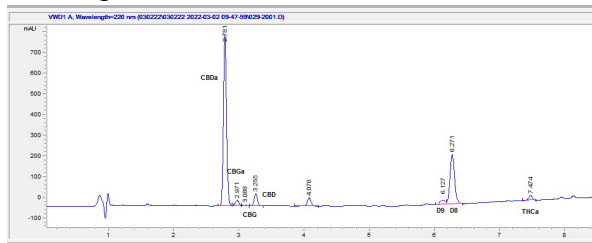
GEORGIA PIE | 200MG DELTA-8 | 2G | BLUNT

Sample Submitted: 05-11-2022; Report Date: 05-11-2022

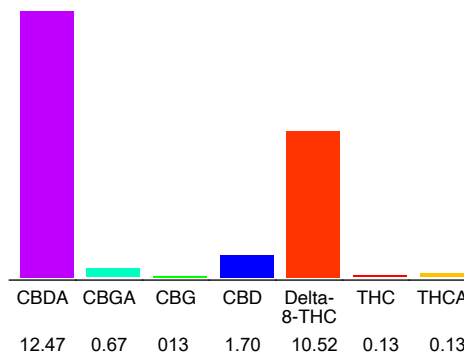
GEORGIA PIE | 200MG DELTA-8 | 2G | BLUNT

Plant Material

### Chromatogram



### Cannabinoid Profile



### Cannabinoid Profile by HPLC

**0.24%**  
Calculated THC Yield

**12.64%**  
Calculated CBD Yield

**25.75%**  
Total Cannabinoids

| Cannabinoid                                       | % wt         | mg/g          |
|---|--------------|---------------|
| CBDA  | 12.47        | 124.7         |
| CBGA  | 0.67         | 6.7           |
| CBG   | 0.13         | 1.3           |
| CBD   | 1.70         | 1.70          |
| Delta-8-THC                                       | 10.52        | 105.2         |
| THC   | 0.13         | 1.3           |
| THCA  | 0.13         | 1.3           |
| <b>Total Cannabinoids</b>                         | <b>25.75</b> | <b>257.5</b>  |
| <b>Calculated THC Yield</b>                       | <b>0.24</b>  | <b>2.44</b>   |
| <b>Calculated CBD Yield</b>                       | <b>12.64</b> | <b>126.36</b> |
| Calculated Maximum THC Yield = THC + 0.877 * THCA |              |               |
| Calculated Maximum CBD Yield = CBD + 0.877 * CBDA |              |               |

#### Marin Analytics, LLC

250 Bel Marin Keys Blvd, Suite D4  
Novato, CA 94949

415-936-6477 / sarabiancalana1@gmail.com

**Sara Biancalana**  
Chief Scientist

This sample has been tested by Marin Analytics, LLC using valid testing methodologies and a quality system. Values reported relate only to the sample tested. Marin Analytics, LLC makes no claims as to the efficacy, safety or other risks associated with any detected or non-detected levels of any compounds reported herein. This Certificate shall not be reproduced except in full, without the written approval of Marin Analytics, LLC.